



EINE NATUR • EINE WELT • UNSERE ZUKUNFT
UN-Naturschutzkonferenz Bonn 2008

Convention on Biological Diversity COP 9, Side Event Bonn, Mai 29, 2008



The Alpine Ecological Network - A Contribution to the Global Network of Protected Areas

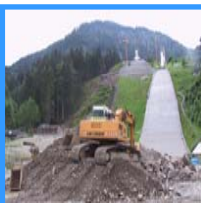
Prof. Dr. Beate Jessel, President of the German
Federal Agency for Nature Conservation

www.bfn.de

Landscapes have been used and are subject to human influence for hundreds of years....

A scenic landscape photograph showing a wooden barn in a field, rolling green hills, and mountains in the background. The barn is a simple, weathered structure with a gabled roof, situated in a grassy field. The hills are covered in lush green grass, and the mountains in the distance are partially covered in snow. The sky is blue with some light clouds.

.... Co-evolution of men and landscapes



Loss of Biodiversity due to:

- intensive use (agriculture, tourism, etc.)
- fragmentation of landscapes and habitats (industrialisation, roads, settlements, etc.)
- climate change

Alpine Convention

- aims to foster conservation of natural landscapes and sustainable development in the Alpine Region
- developed since the first Alpine Conference in October 1989
- in 2002 launching of the Alpine-Carpathian Partnership
- the Protocol on „Conservation of Nature and the Countryside“- Article 12 asked for the establishment of an ecological network in the Alps
- in March 2007 launching of the „Platform Ecological Network“ (current chair Germany - BfN)



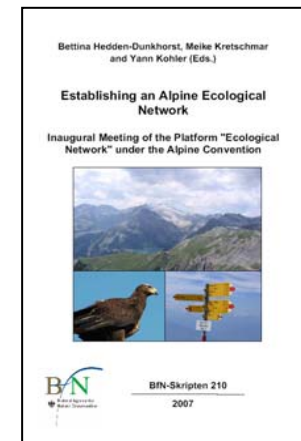
Mandate

- Foster implementation of Article 12: “Member states take suitable measure to establish a network of protected areas and biotopes. They commit themselves to harmonise goals and measures in the management of transboundary protected areas”
- Make a significant contribution to the establishment of a global network of protected areas (CBD), and to serve as a model region
- Provide a forum that combines expertise and local knowledge and facilitates informed, joint action



Platform „Ecological Network“ – Current Activities

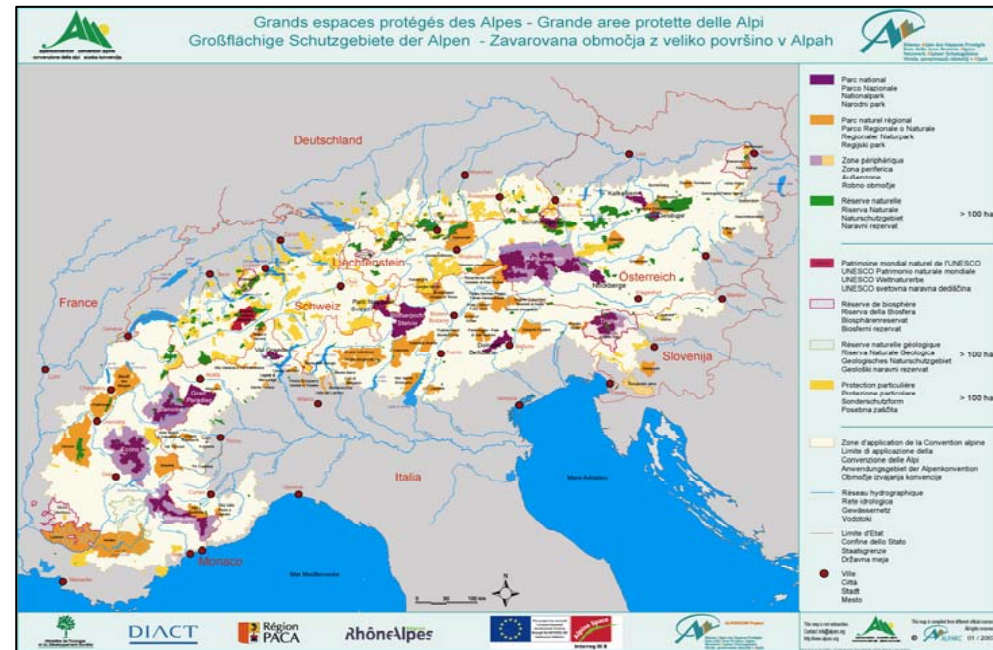
- harmonise scientific approaches
- communicate with the broader public
- foster the implementation of concrete measures to support the network



Status of Protection in the Alpine Region



- About 900 protected areas > 100 ha each, with different status of protection (**mostly not connected**).
- Research shows that if 25% of a region is protected, covering all important habitats, the complete set of species can be preserved, **if protected areas are connected**



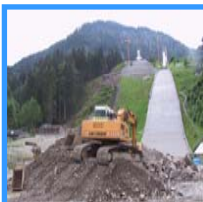
Functionally, the ecological network is comprised of

- core areas,
- connecting sites
- and connecting elements (ecological corridors and stepping stones)

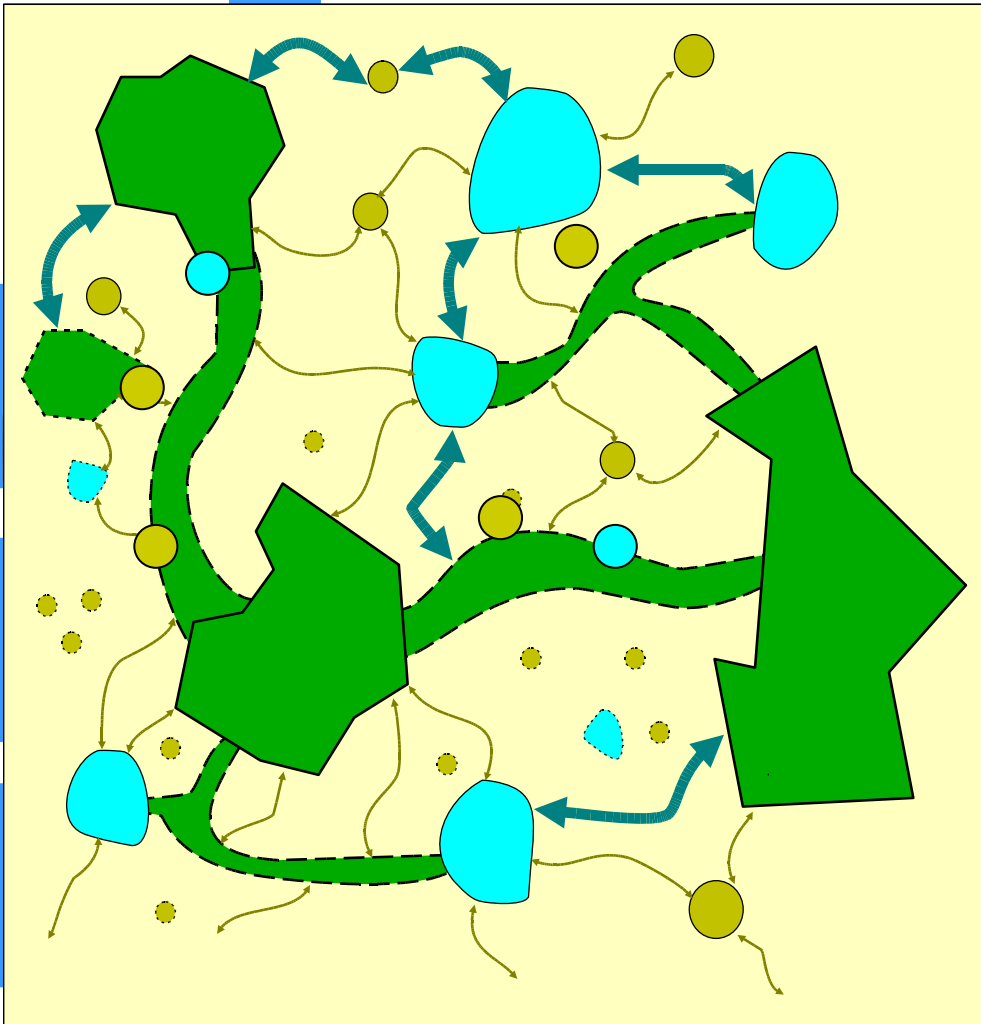


A Concept for Implementation

- **Assessment of existing national parks, nature reserves, NATURA 2000 sites, etc.**
- **Identification of habitats for target species for the ecological network**
- **Assessment of demand for additional sites**
- **Search for suitable development sites**
- **Implementation of coherence aspects of the Habitat Directive**



Spatial Dimensions of Ecological Networks



Function	core area	corridor	stepping stone
national			
regional			
local			

