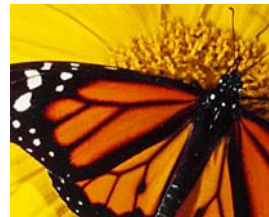


The situation and demands of the Iberian lynx (*Lynx pardinus*) with regard to the coherence of the Natura 200 network

Luis Suarez
(WWF - Spain)
Isle of Vim
10/5/2005





DESCRIPTION

- The Iberian Lynx is a small size cat with long legs, short tail, whiskers around its face and spotty coat.
- The Iberian lynx **feeds** basically on the **wild rabbit** (80% of the diet).
- It lives in southwest of the Iberian peninsula in mosaic areas of Mediterranean forest



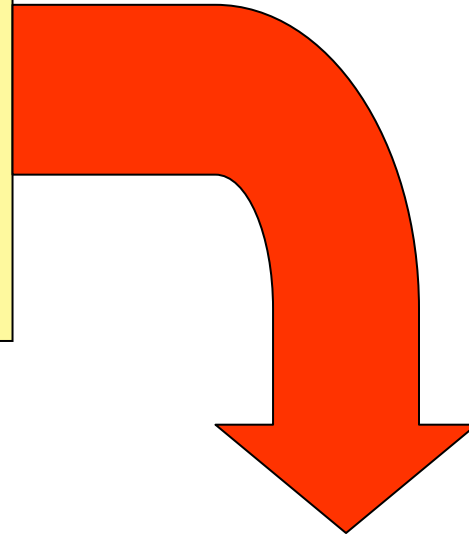




POPULATION SIZE

1100 individuals estimated

Living in 48 separated breeding areas in Spain and Portugal (**1988**) in a surface of 11.000 km²



Less than **100 individuals** and only 2 stable populations: Andujar (Eastern Sierra Morena) and Doñana (**2004**)





THREATS

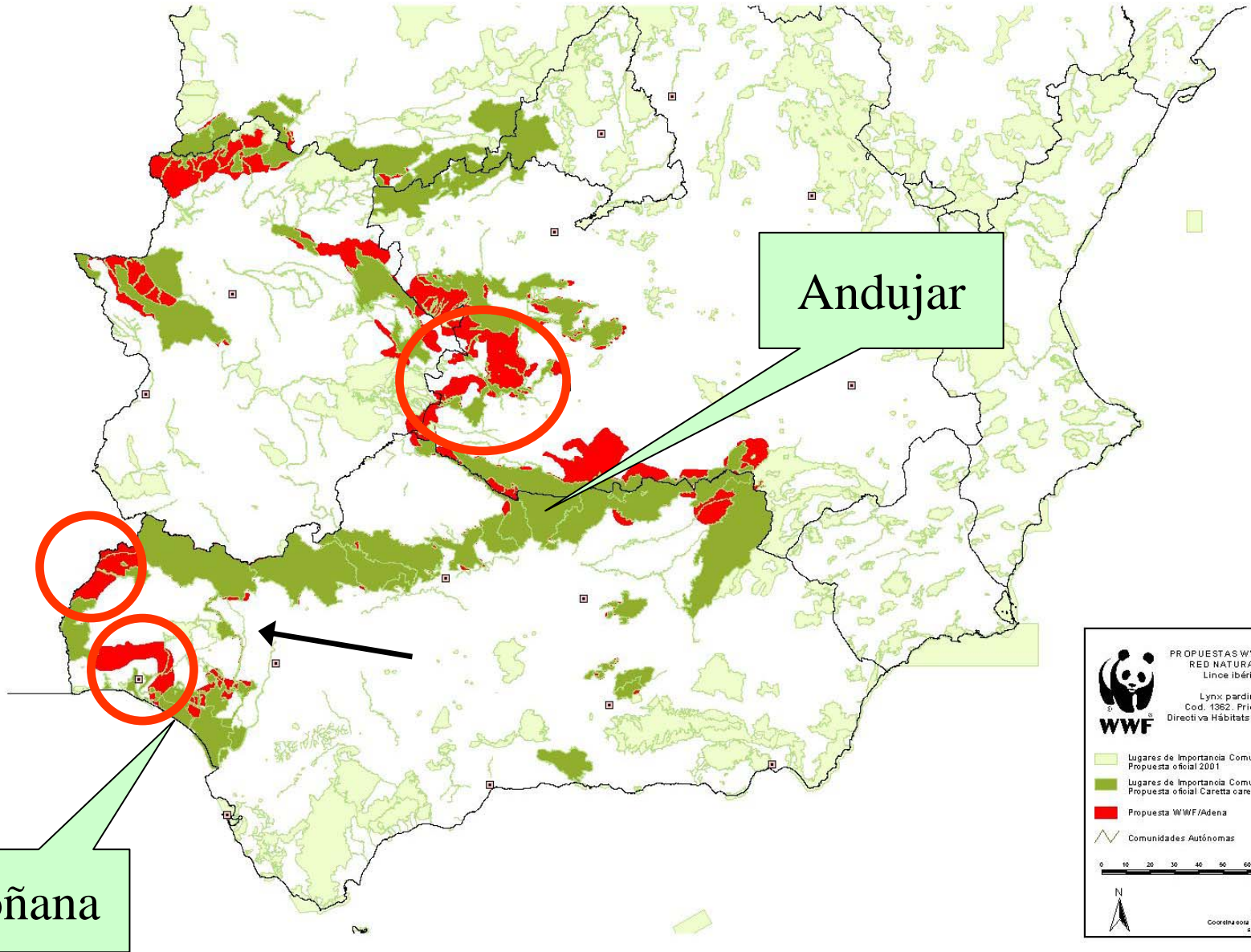
1. Decline in rabbit populations
2. High mortality due to human activities
3. Loss and habitat fragmentation
4. Fragmentation of populations





Natura 2000 proposal for the Iberian lynx

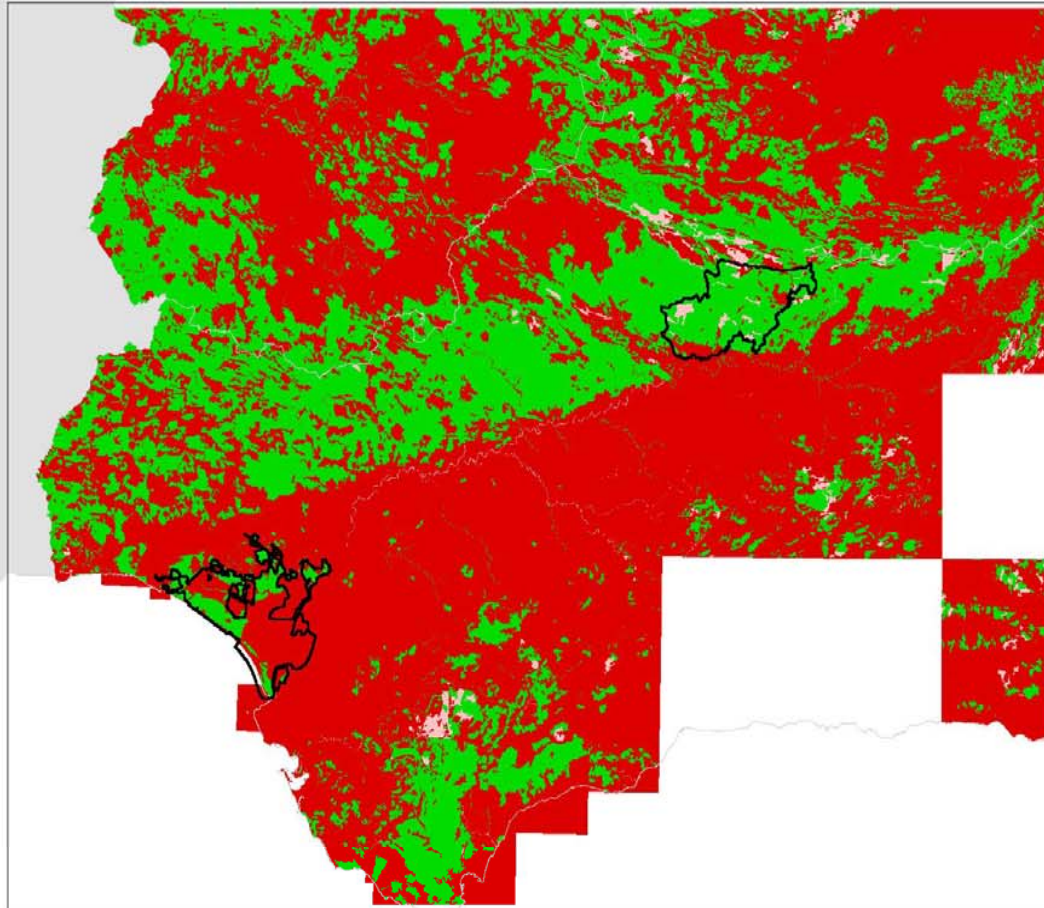
- WWF-Spain developed a **Shadow list** with:
74 proposed areas (48 breeding areas + 26 new sectors including areas with occasional presence and corridors), covering 2.732.407 Ha
- The last version of the official proposal for the Iberian lynx (2004) covers 2.615.103 Ha.
- The apparent difference is about 117.304 Ha, but there are about 800.000 Ha of gap. Mainly corridors and potential areas are lacking.





Some difficulties

- Basically only the historical breeding areas have been included .
- In some cases also some secondary areas were included too, but only if they were also considered for other species/habitat.
- There aren't corridors (except for infrastructures).
- **Fragmentation** of the territory and of the population has not taken in account, so there is not a large continuum area (except in Sierra Morena).
- There is not a “recovery” approach.
- In some cases, new data have been used “against” the species.



Available Habitat

LEYENDA

- Apto presencia estable
- Apto dispersión
- No apto
- No Data



0 30 60 90 120 150 Kilometers



WWF / Adena
Sustainable Use of Resources in Southern Iberia



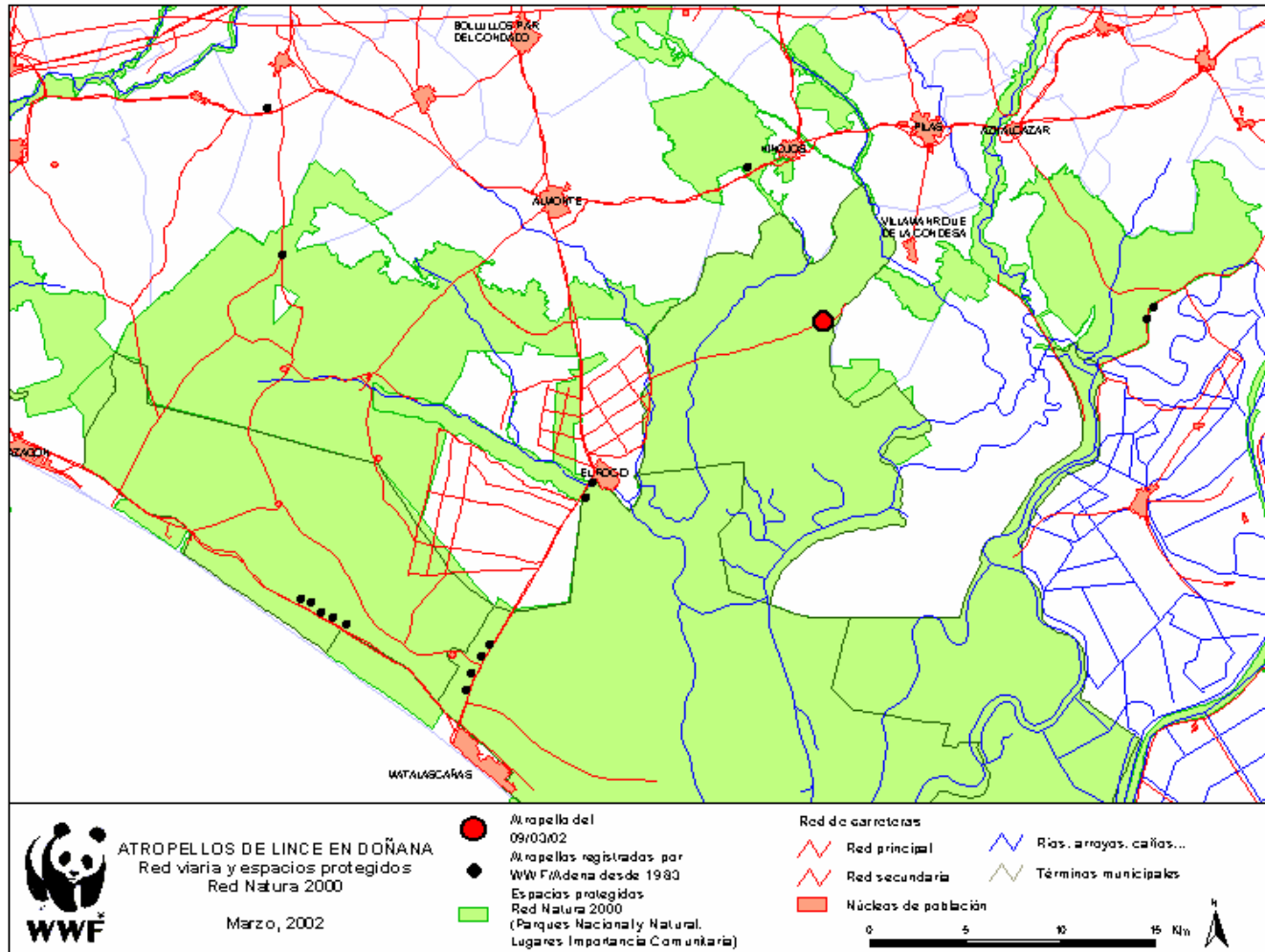
Universidad Autónoma de Madrid
Departamento de Ecología

Universidad Pública de Madrid
Departamento de Proyectos
y Clasificación Rural

Mapa de hábitat potencial
Lynx pardinus

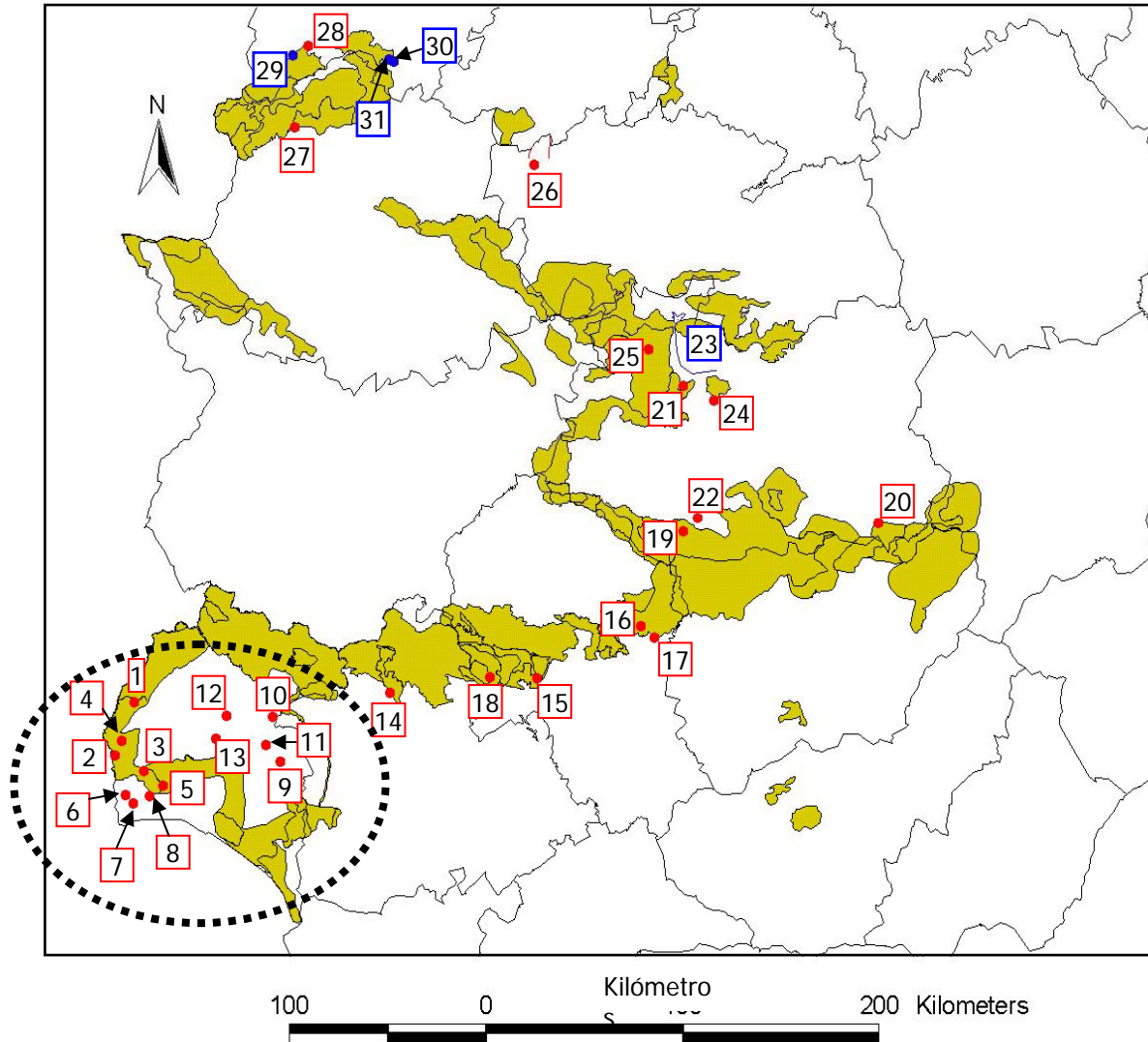


Iberian lynx and roads in Doñana



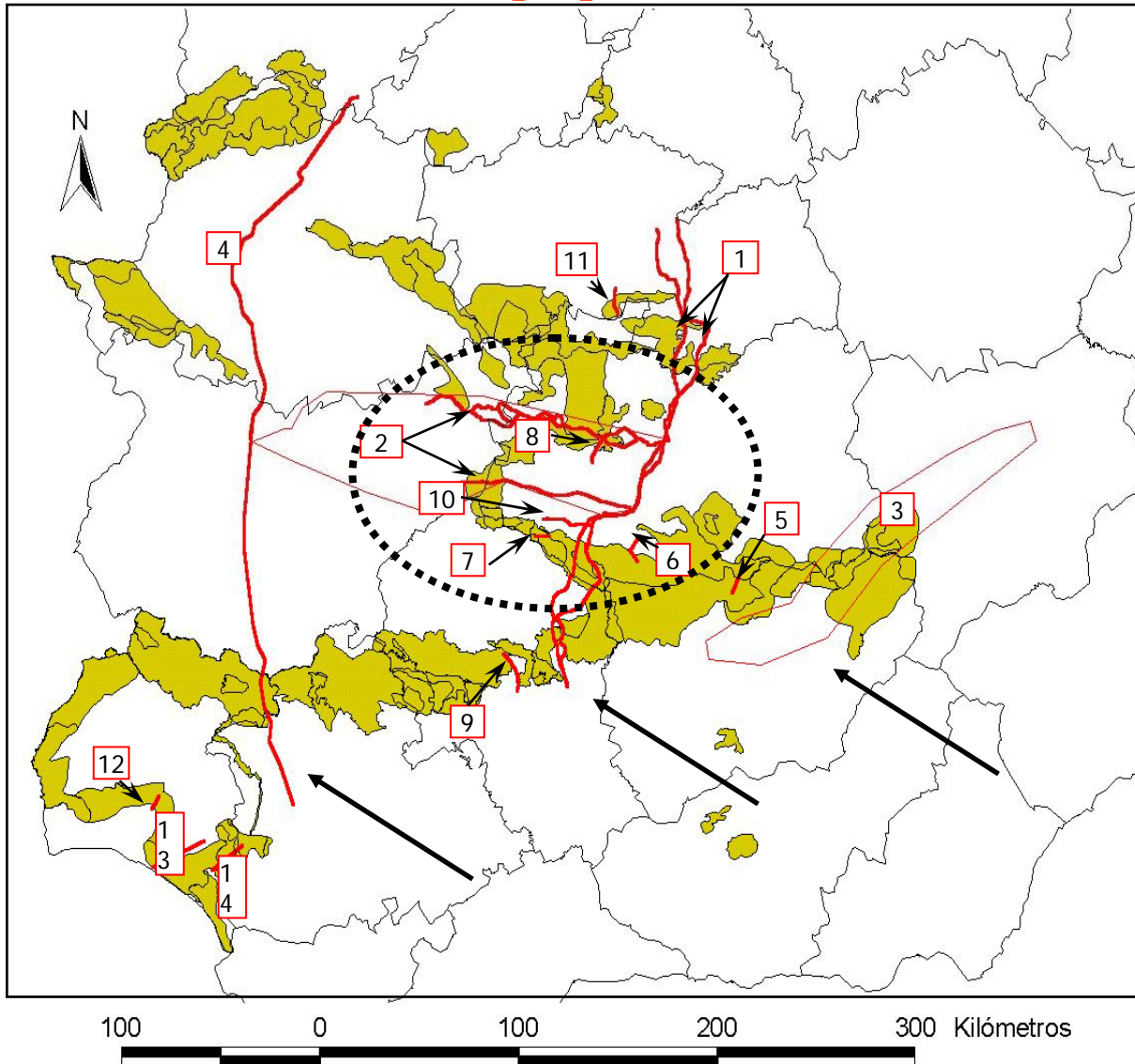


Dams and Iberian lynx proposal





Linear infrastructures and Iberian lynx proposal



Leyenda

1. Autopista peaje Toledo-Ciudad Real-Autovía N-IV.
2. Autovía conexión autovías de Ciudad Real-Puertollano y Extremadura. Tramo Miajadas-Mérida.
3. Autovía Linares-Albacete.
4. Autovía de la Plata.
5. Nueva calzada Despeñaperros, Venta de Cárdenas-Santa Elena.
6. Mejora y modificación del trazado de las carreteras CR-501, de Mestanza a Mina Diógenes y CR-500 del límite con Jaén a Mina Diógenes
7. Nueva carretera de San Benito
8. Nueva carretera y mejora de trazado entre Luciana y Abenojar
9. Variante de trazado de la CN-432 de Granada a Badajoz, P.K. 247,1 al 260,0. Tramo: El Vacar-Córdoba
10. Acondicionamiento carretera CM-4202 entre P.K. 28,097 y P.K. 52,047 en Brazatortas.
11. Acondicionamiento CM-403 , tramo Ventas con Peña Aguilera - Puerto del Milagro y Molinillo.
12. Variante de Beas y Trigueros de la carretera N - 435 de Badajoz y Zafra a Huelva.
13. Carretera entre Almonte y Mazagón
14. Adecuación de camino agrícola entre Villamanrique de la Condesa y El Rocío



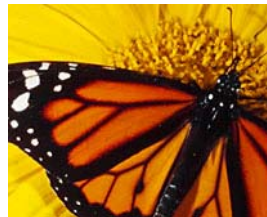
Demands for coherence

- Not only the breeding areas but also the areas with occasional presence and the dispersal areas should be considered.
- Viable corridors between core areas in order to guarantee their connection must be created.
- Rivers are not enough for large carnivores!!
- Stop the habitat fragmentation
- Incorporate the most recent data “in a constructive way”.
- Recover and maintain good potential areas → Management.



Thank you very much!

www.
wwf
.es



Author/Contact:

Suarez, Luis
WWF Spain
Gran Via de San Francisco 8, Esc. D
28005 Madrid
Spain
e-mail: lsuarez@wwf.es

This presentation was held at the International Workshop “Ecological networks and coherence according to article 10 of the Habitats Directive” 9-13 May 2005 at the Isle of Vilm.

© The copyright of this presentation lies by the author.