

Approaches to create transboundary networks of protected areas in Germany



Dr. Karin Ullrich

Department of
Biotope Protection and
Landscape Ecology



**Results of the workshop
“International linkages of
ecological corridors in
Germany”**

Isle of Vilm

3rd – 5th November, 2004



Topics



- **Background**
- **Objectives of the workshop**
- **Data sources**
- **Results**
- **Outlook**

Background – Legal aspects



Federal Agency for Nature Conservation
The International Academy of Nature Conservation
Isle of Vilm (INA)



International linkages of
ecological corridors in Germany

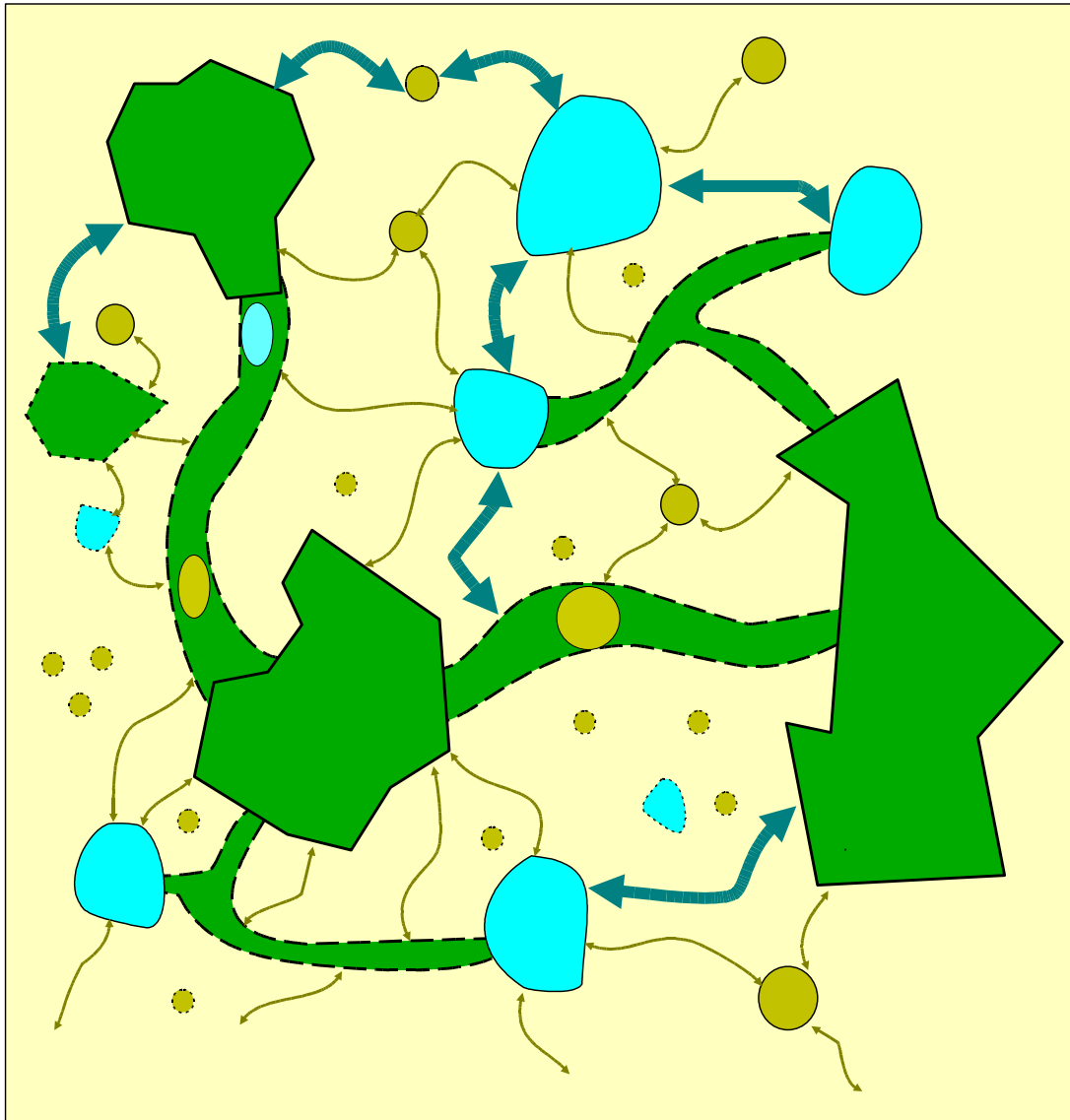
International workshop
3 – 5 November 2004
Isle of Vilm



Legal background

- Article 3 of the German Federal Nature Conservation Act (ecological network)
- Habitats Directive – Art. 10
- PEEN (Council of Europe)

Background - Ecological networks



Spatial levels of ecological networks

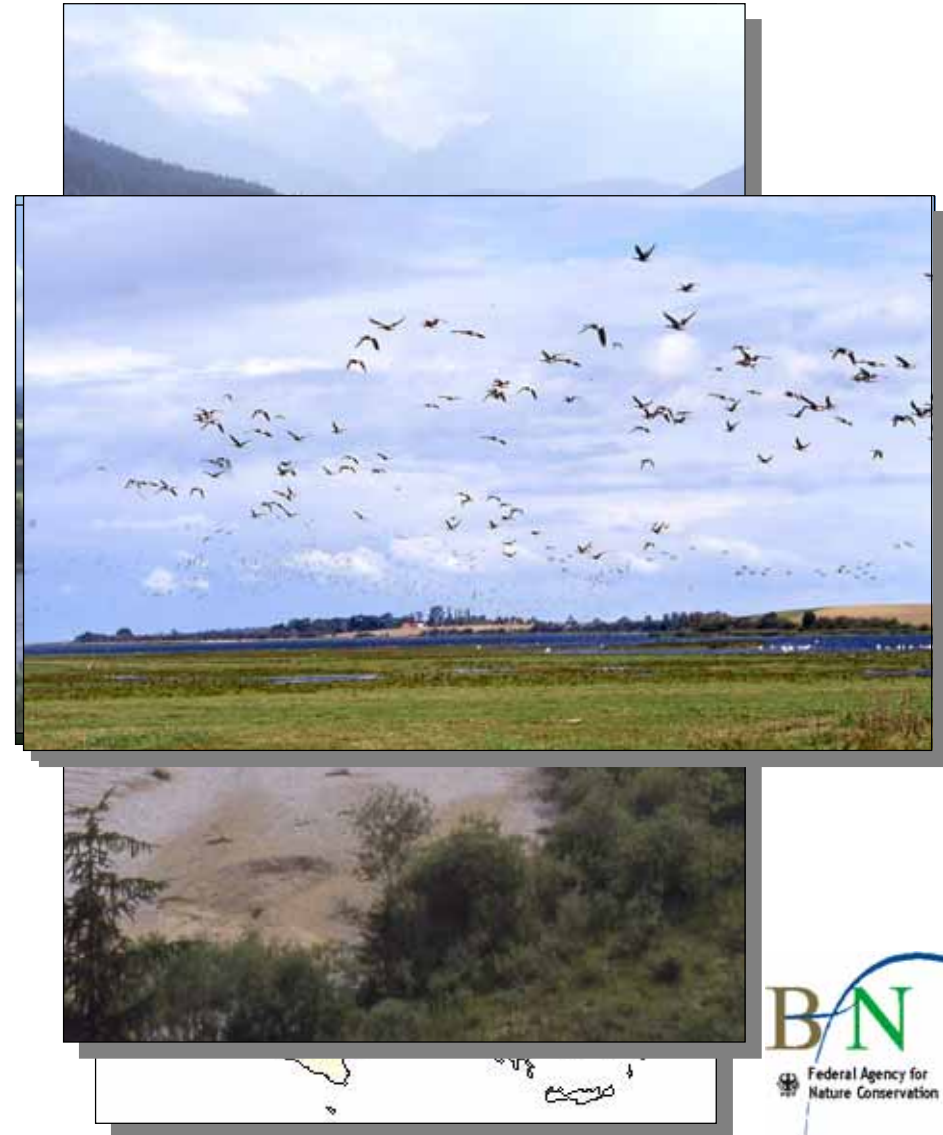
function	core areas	corridors	stepping stones
national			
regional			
local			

Background - European dimension

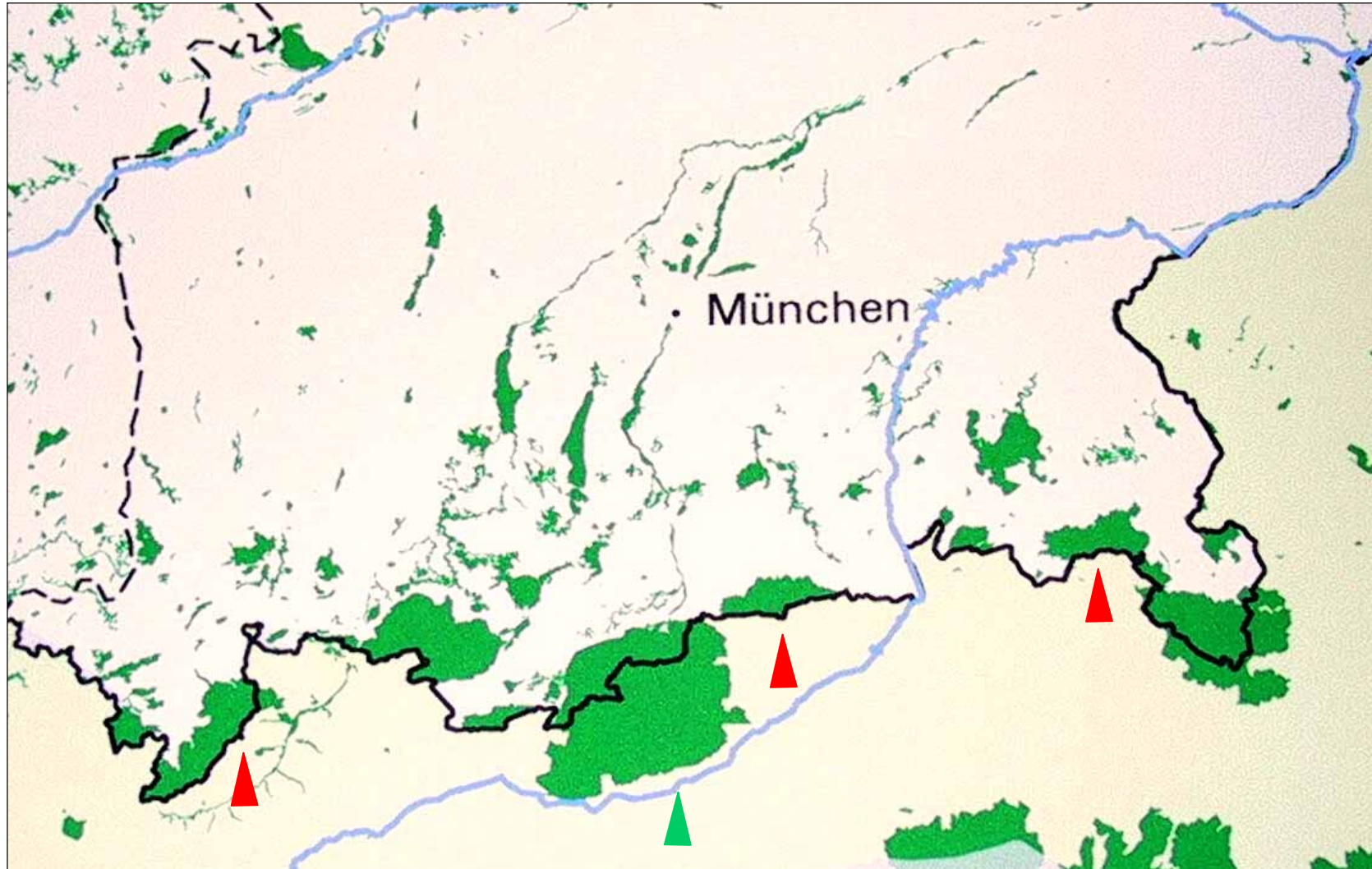


Significance

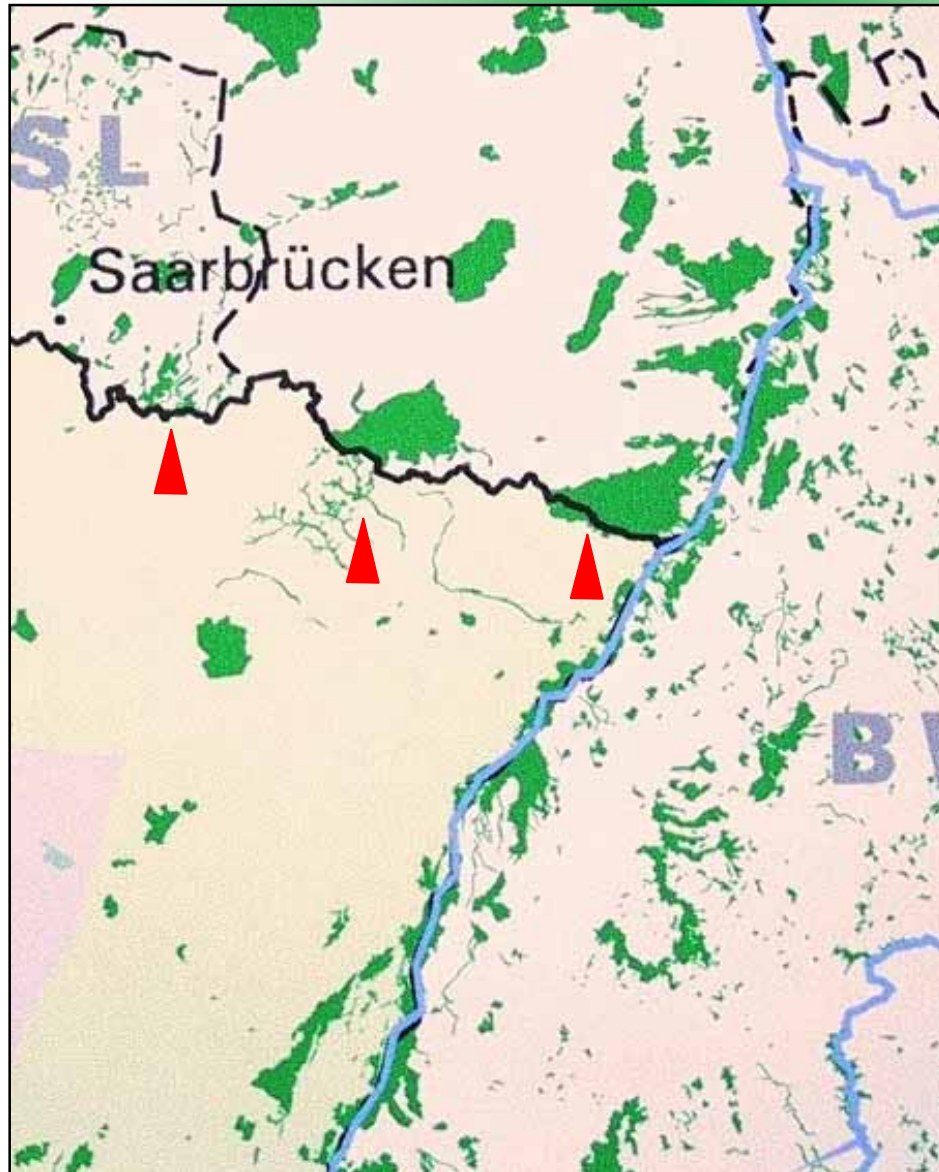
- For **migrating species** national borders have no importance
- Many **rivers** in Germany are **forming or crossing borders**
- **Large forest areas** are often on the border line (e.g. **mountain ranges**)
- **Valleys of the alps** often cross borders
- The **Green belt** has a European dimension
- etc.



Background – Natura 2000



Background – Natura 2000



→ Necessity to consider coherence of Natura 2000 sites across borders (“harmonisation”)

Objectives of the workshop



Presentation

- Existing national (regional) **plannings for ecological networks** – concepts and results

Working groups – tasks

- Identify core areas and ecological corridors related to the borders of Germany on an **international, national (and regional) scale**
- Assess the functional **efficiencies** and **deficiencies** of these linkages
- Initiate and implement **international consultation** and **cooperation**

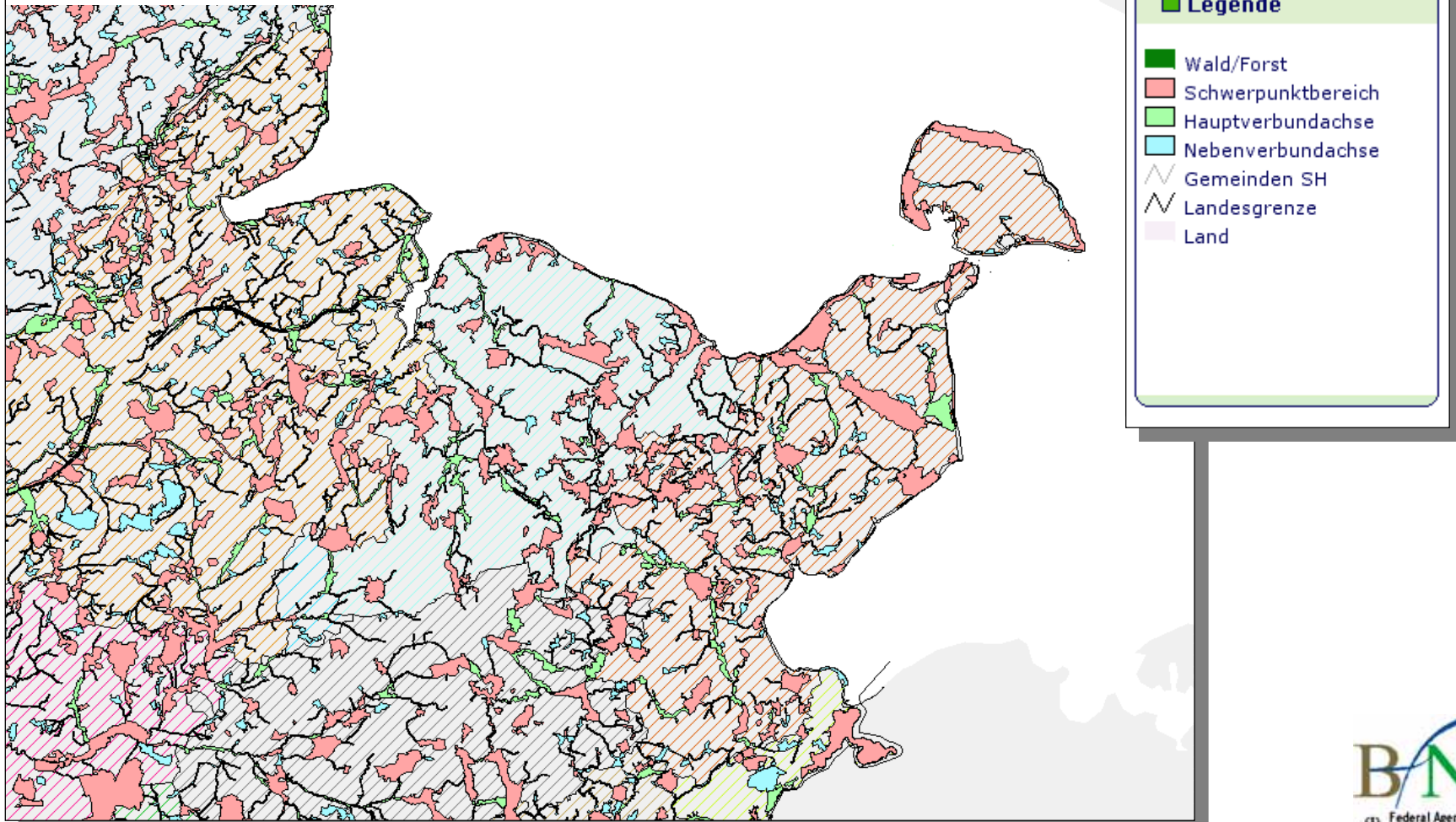
Long-term goal

- Initiate **transboundary nature conservation projects**

Data source – regional plannings of ecological networks



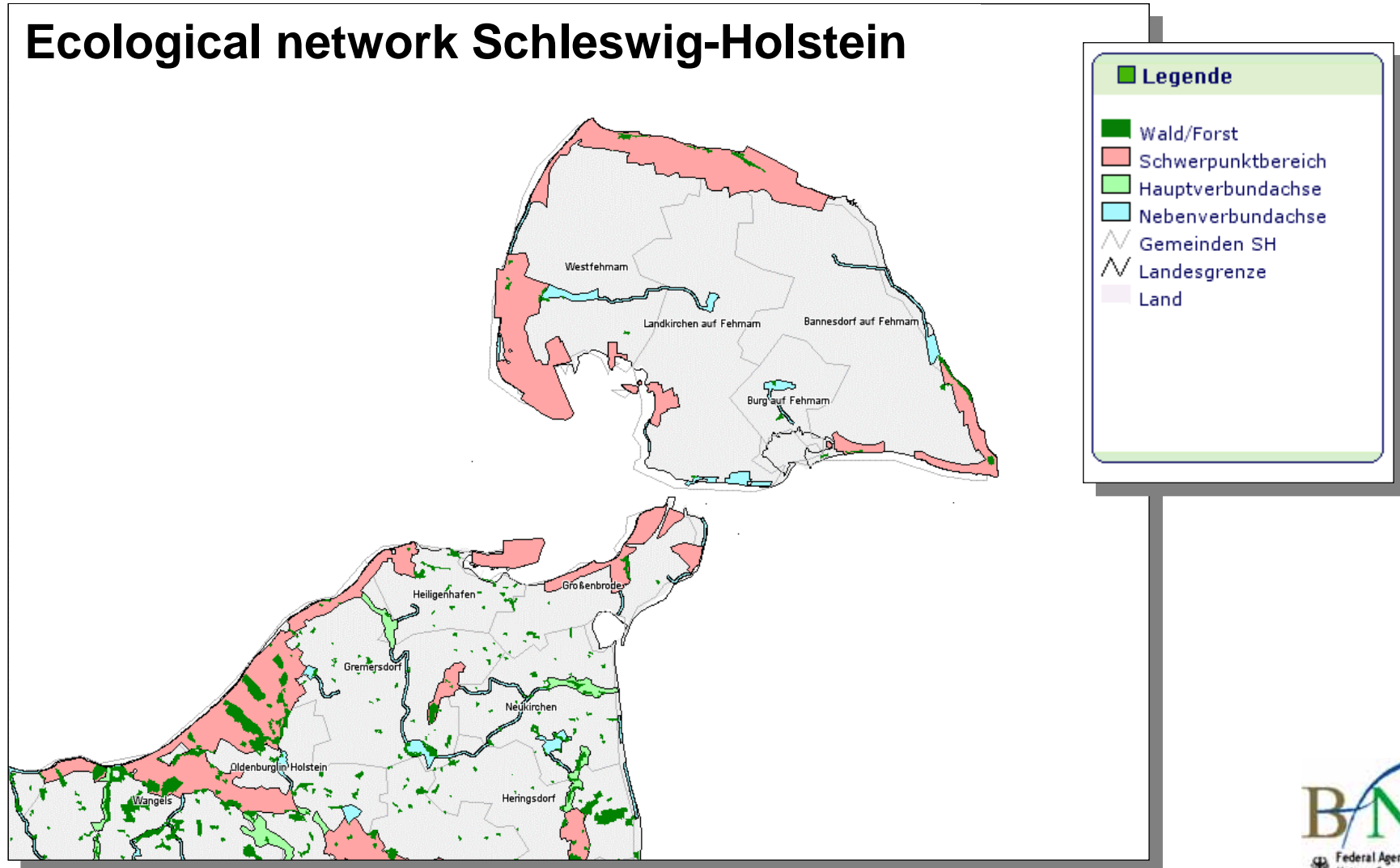
Ecological network Schleswig-Holstein



Data source – regional plannings of ecological networks



Ecological network Schleswig-Holstein

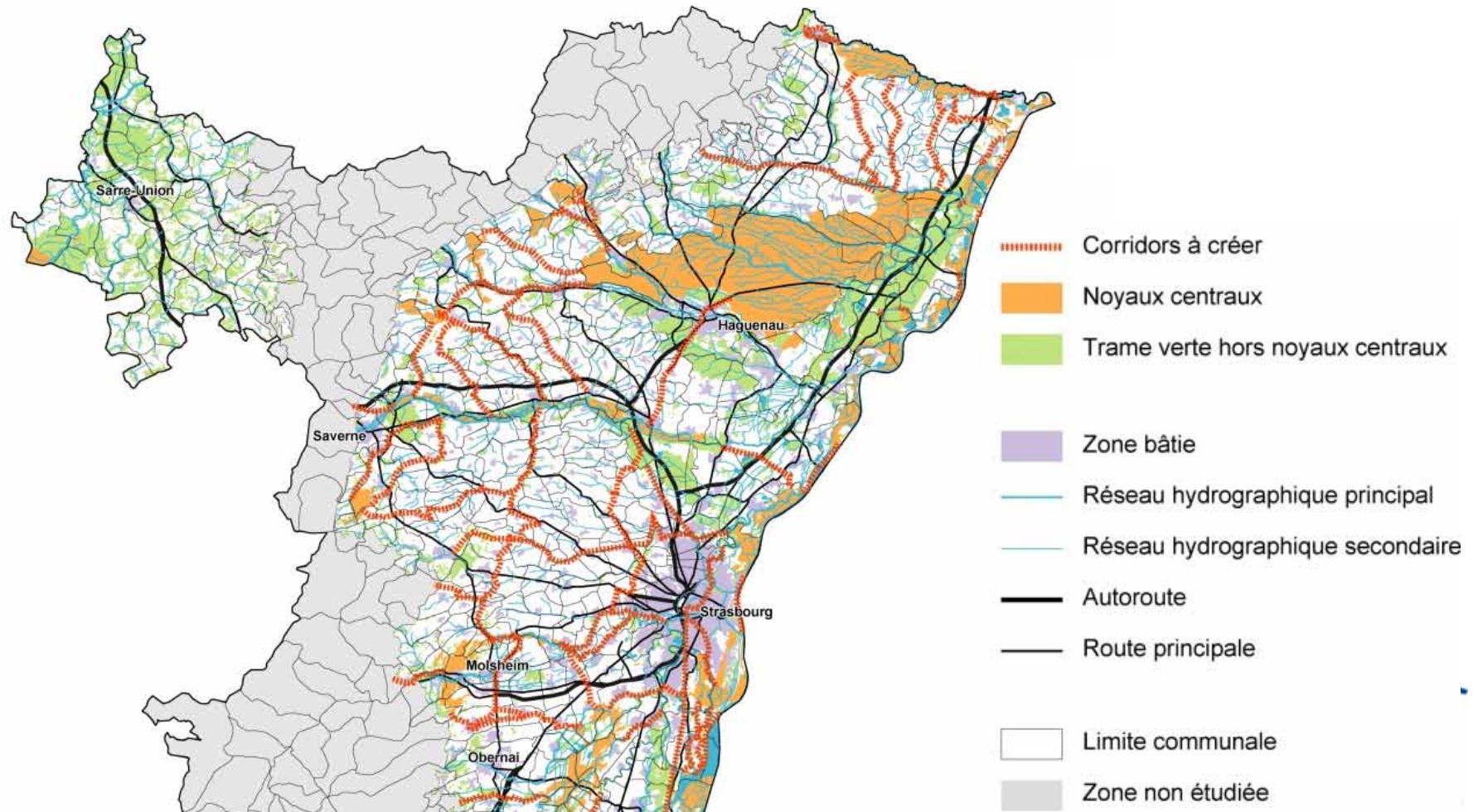


Data source – regional plannings of ecological networks



Projet de trame verte en Alsace - Janvier 2003

Connexions à créer



Data source – National plannings of ecological networks



DK	Danmarks Naturfredningsforening (2004): Fremtidens Natur i Danmark. - Rhodos Internationalt Forlag for Videnskab og Kunst. 160 S.
NL	Ministerie van Landbouw, Natuur en Voedselkwaliteit (2004): De Ecologische Hoofdstructuur in beeld vitaal en verbindend. Ministerie van Landbouw, Natuur en Voedselkwaliteit, Den Haag, NL. 124 S.
CZ	Territorial System of Ecological Stability, TSES
PL	Foundation IUCN Poland (1995): National Ecological Network EECONET - Poland. Warszawa. 66 S.
CH	Berthoud, G., Lebeau, R. P. & Righetti, A. (2004): Nationales ökologisches Netzwerk REN. Schlussbericht. Bundesamt für Umwelt, Wald und Landschaft, Bern (= Schriftenreihe Umwelt Nr. 373). 131 S.

Data source – Pan European Ecological Network (PEEN)

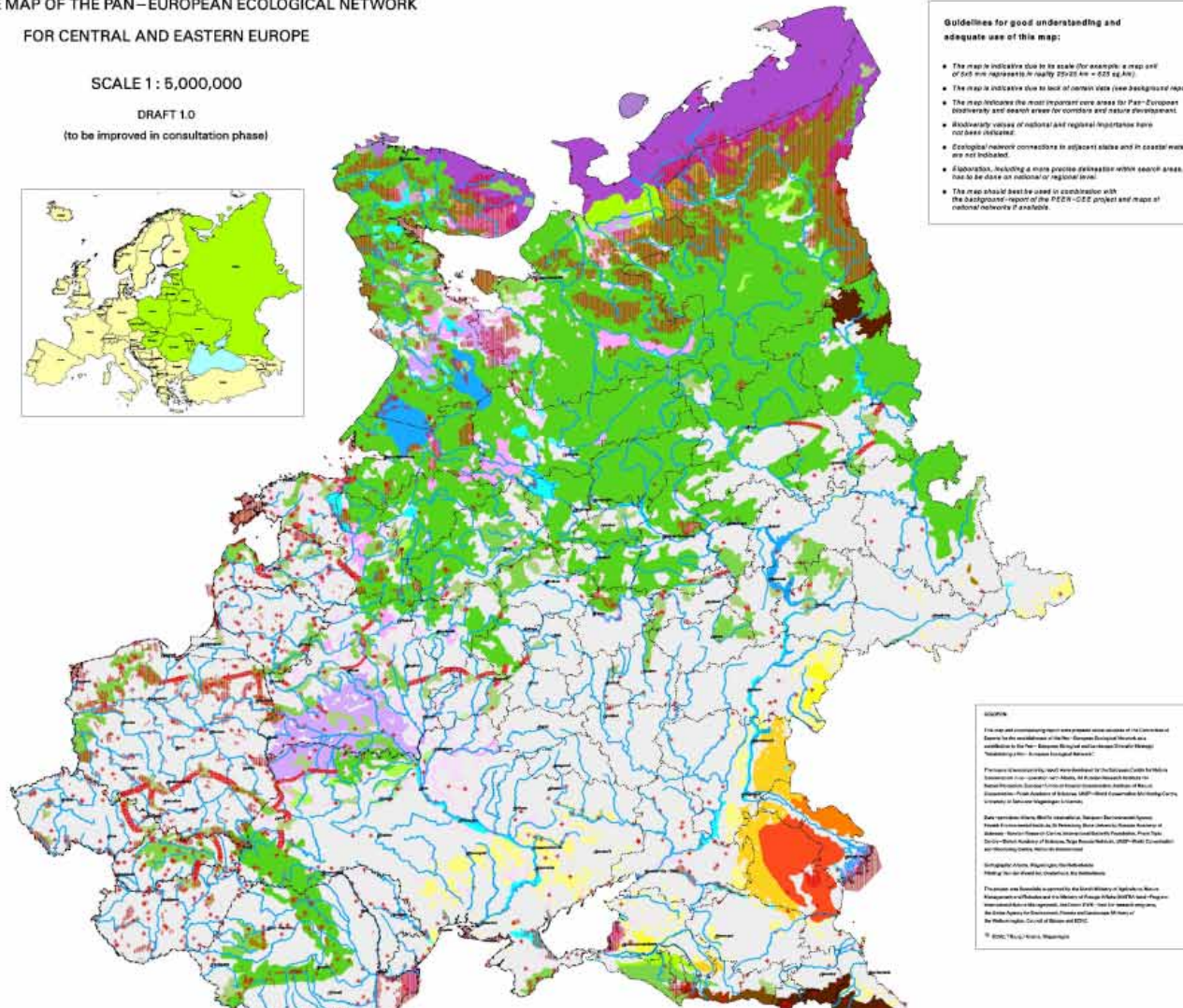


INDICATIVE MAP OF THE PAN-EUROPEAN ECOLOGICAL NETWORK
FOR CENTRAL AND EASTERN EUROPE

SCALE 1 : 5,000,000

DRAFT 1.0

(to be improved in consultation phase)



Guidelines for good understanding and adequate use of this map:

- The map is indicative due to its scale (for example a map of 1 cm represents in reality 250 km = 0.25 sq km).
- The map is indicative due to lack of certain data (see background reports).
- The map indicates the most important core areas for Pan-European biodiversity and search areas for corridors and nature development.
- Biodiversity values of national and regional importance have not been delineated.
- Ecological network corridors in adjacent states and in coastal waters are not indicated.
- Elaboration, including a more precise delineation within search areas, has to be done on national or regional level.
- The map should best be used in combination with the background report of the PEEN-CED project and maps of national networks if available.

SOURCE:

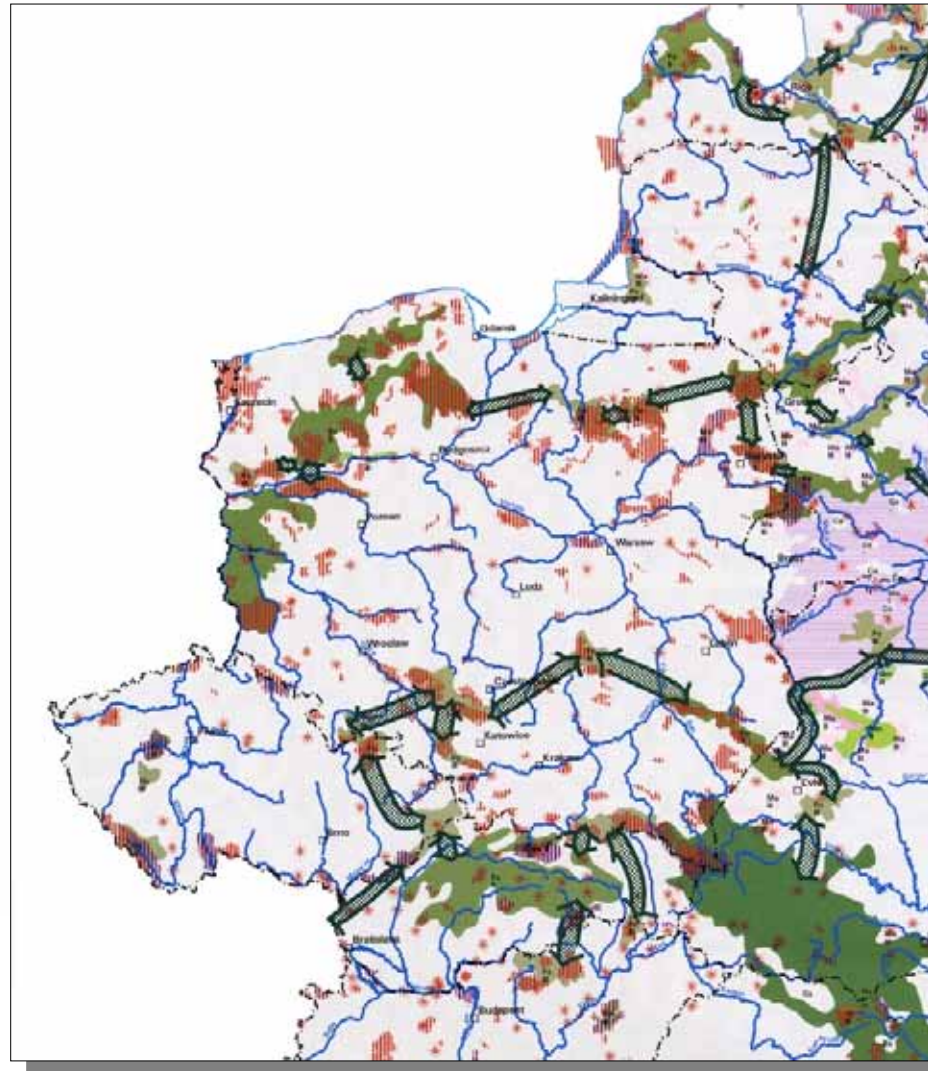
This map and accompanying report were prepared on the basis of the Commission of the European Communities and the European Environment Agency (EEA) contribution to the Pan-European Ecological Network (PEEN) project.

Particular thanks go to the following institutions for their contribution to the PEEN project: the Ministry of Environment and Nature Conservation of the Czech Republic; the Ministry of Environment and Nature Conservation of the Slovak Republic; the Ministry of Environment and Nature Conservation of the Polish Republic; the Ministry of Environment and Nature Conservation of the Hungarian Republic; the Ministry of Environment and Nature Conservation of the Romanian Republic; the Ministry of Environment and Nature Conservation of the Bulgarian Republic; the Ministry of Environment and Nature Conservation of the Ukrainian Republic; the Ministry of Environment and Nature Conservation of the Serbian Republic; the Ministry of Environment and Nature Conservation of the Montenegro Republic; the Ministry of Environment and Nature Conservation of the Bosnia and Herzegovina Republic; the Ministry of Environment and Nature Conservation of the Croatia Republic; the Ministry of Environment and Nature Conservation of the Slovenia Republic; the Ministry of Environment and Nature Conservation of the Macedonia Republic; the Ministry of Environment and Nature Conservation of the Albania Republic; the Ministry of Environment and Nature Conservation of the Kosovo Republic; the Ministry of Environment and Nature Conservation of the Montenegro Republic; the Ministry of Environment and Nature Conservation of the Serbia Republic; the Ministry of Environment and Nature Conservation of the Bosnia and Herzegovina Republic; the Ministry of Environment and Nature Conservation of the Croatia Republic; the Ministry of Environment and Nature Conservation of the Slovenia Republic; the Ministry of Environment and Nature Conservation of the Macedonia Republic; the Ministry of Environment and Nature Conservation of the Albania Republic; the Ministry of Environment and Nature Conservation of the Kosovo Republic.

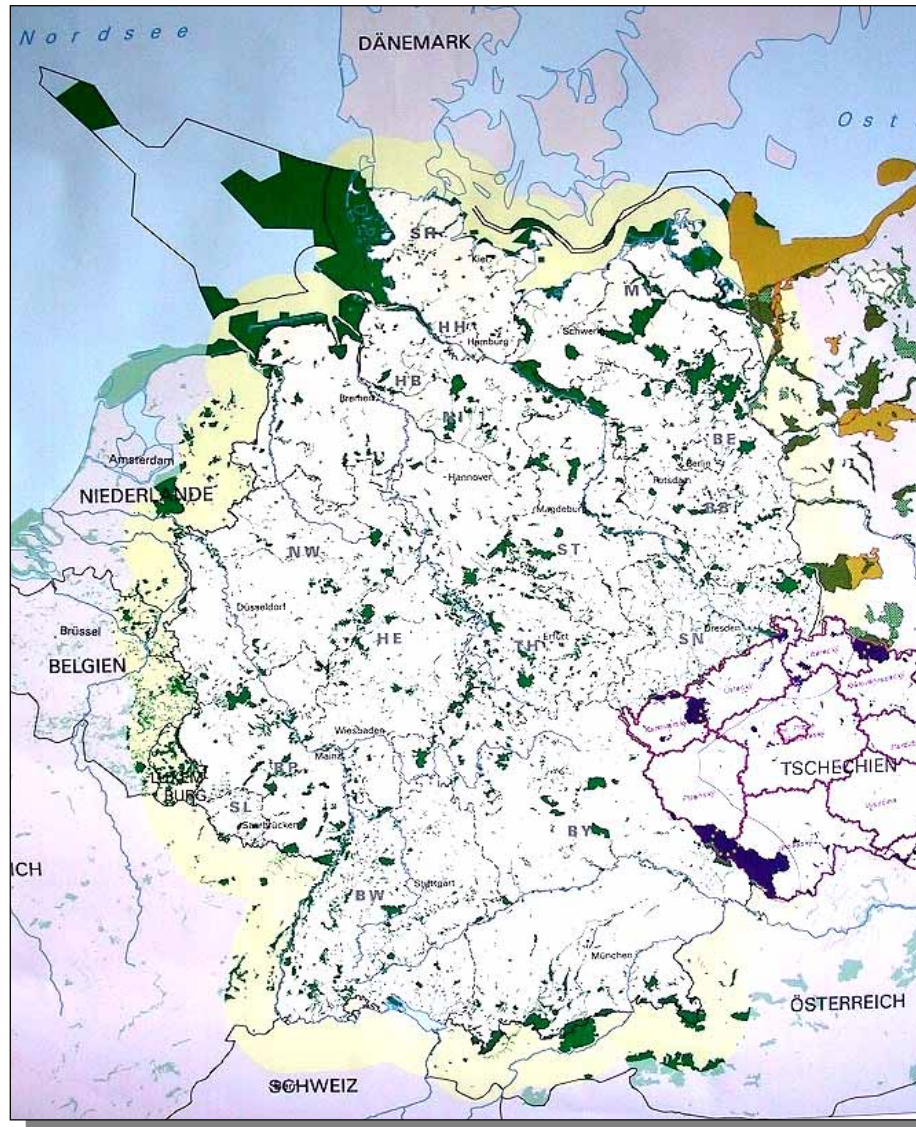
Data source – Pan European Ecological Network (PEEN)



INDICATIVE MAP OF THE PAN – EUROPEAN ECOLOGICAL NETWORK
FOR CENTRAL AND EASTERN EUROPE



Data source – Natura 2000 sites



- NL: Natura 2000 (GIS)
- BE: Natura 2000 (GIS)
- L: Natura 2000 (GIS)
- F: Natura 2000 (GIS)
- CH: -
- A: Natura 2000 (GIS)
- CZ: Natura 2000 (Image)
- PL: Scientific data base for Natura 2000 (Image)
- DK: - (technical problem)

 50 km buffer

Tasks for the working groups

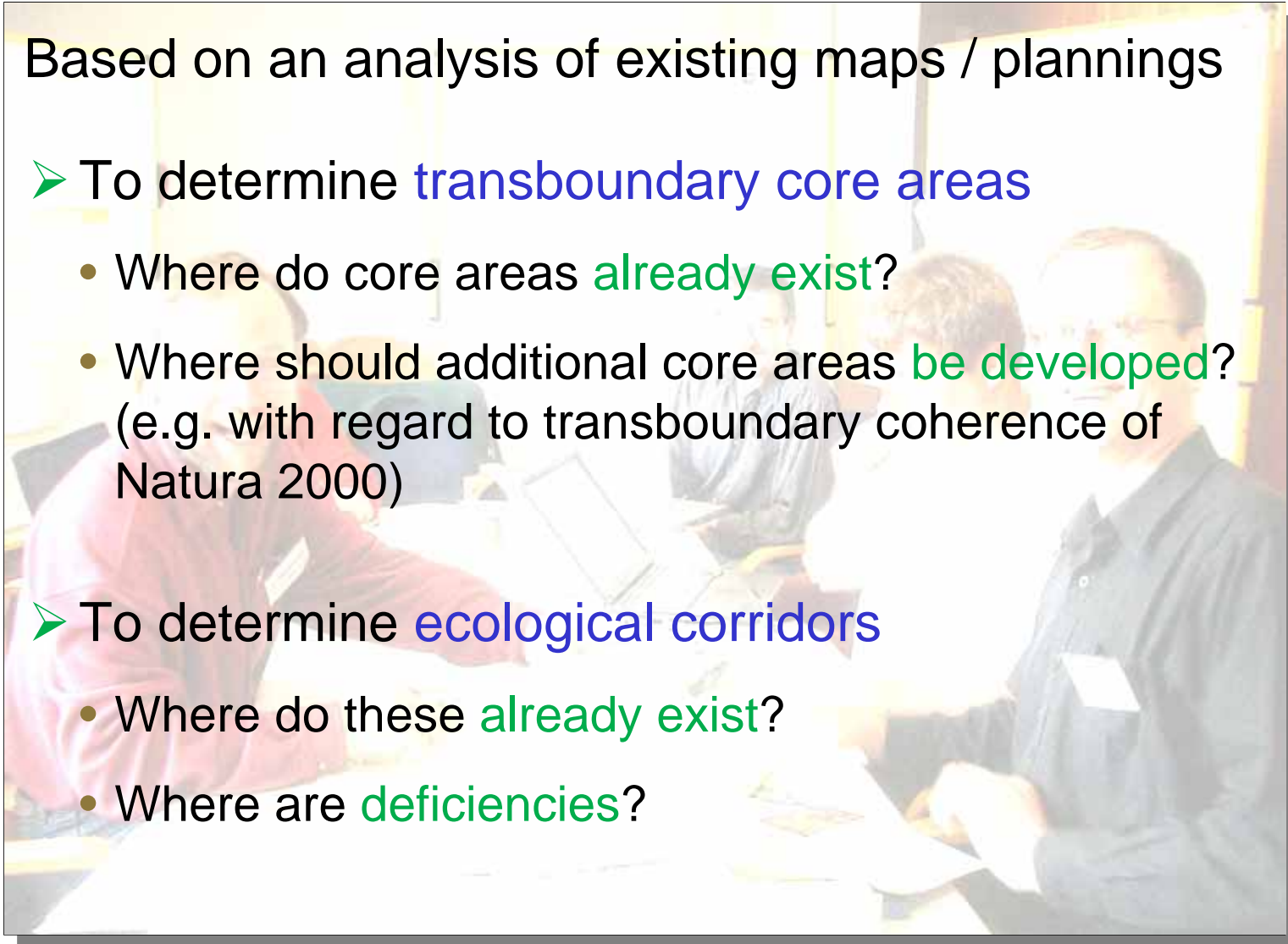


Tasks for the working groups

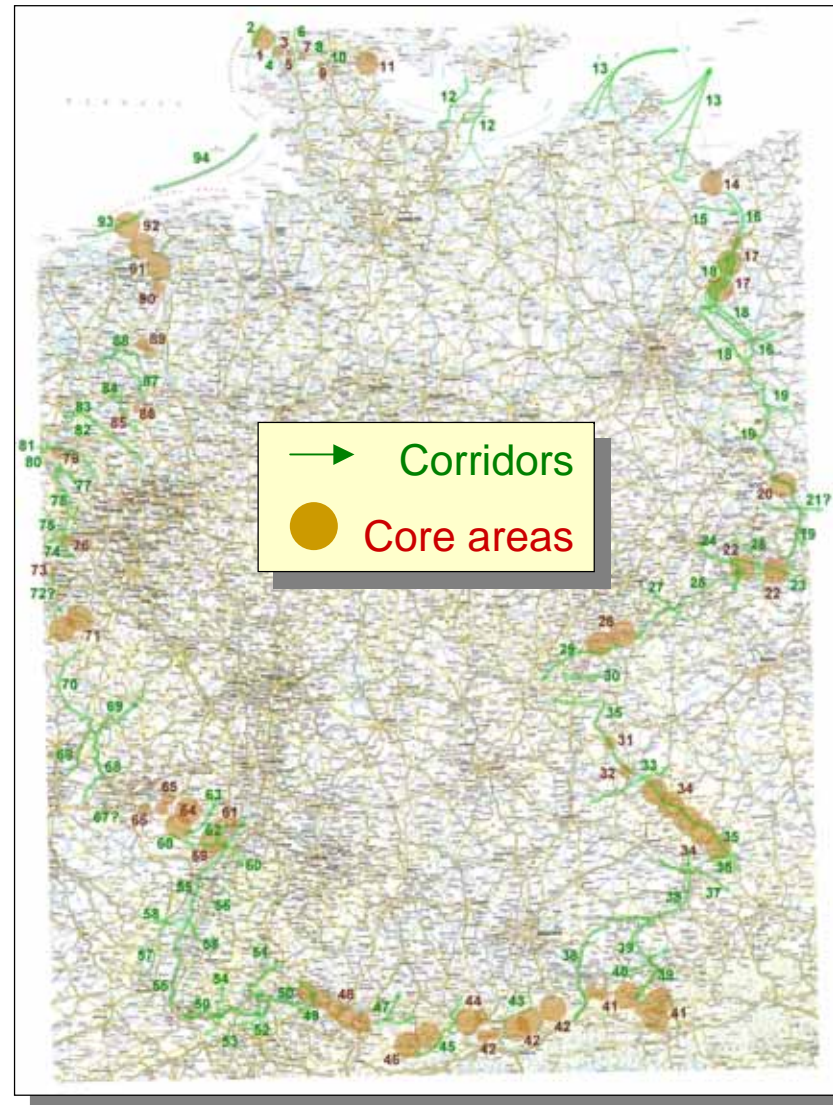


Based on an analysis of existing maps / plannings

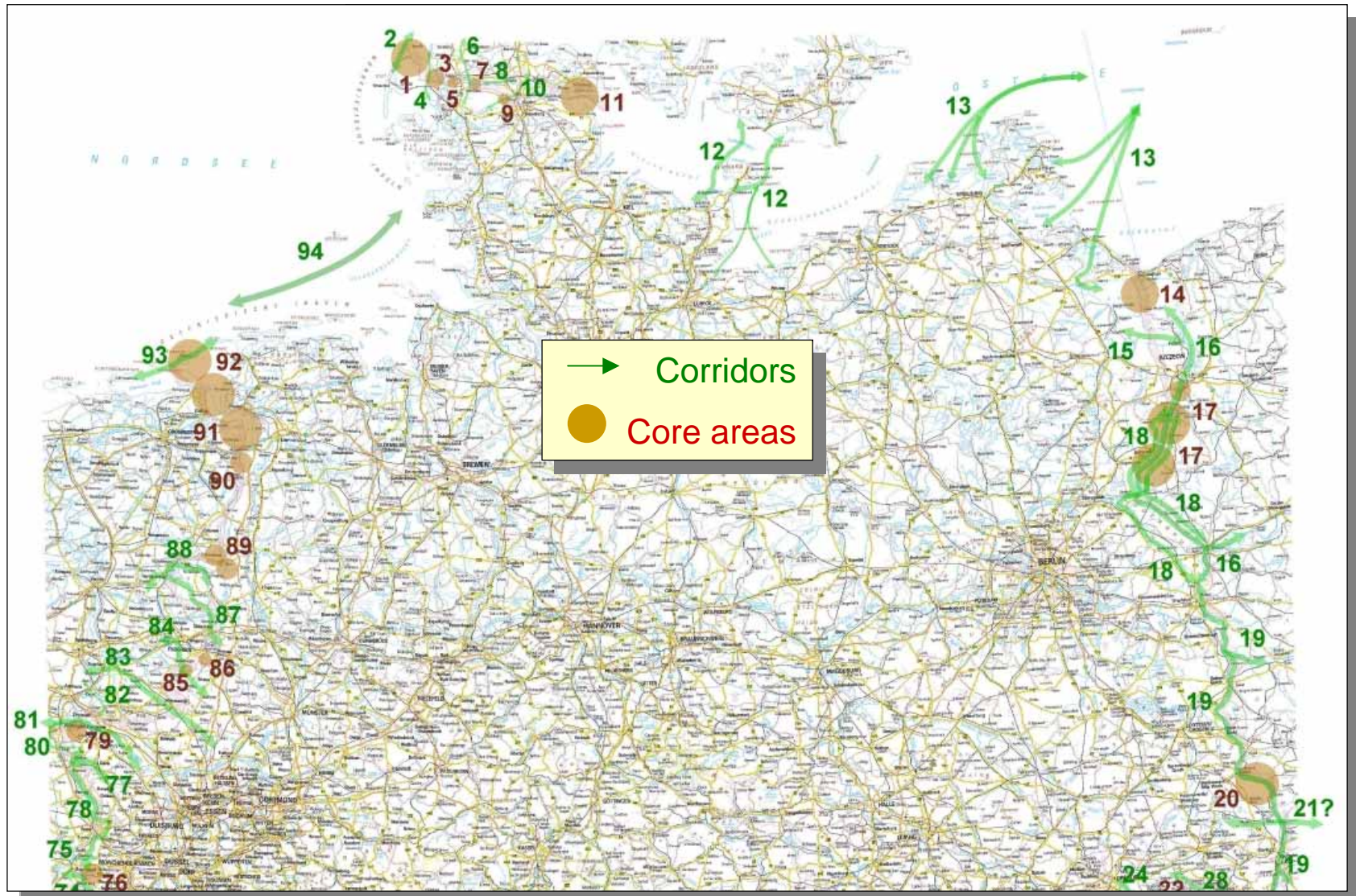
- To determine **transboundary core areas**
 - Where do core areas **already exist**?
 - Where should additional core areas **be developed**? (e.g. with regard to transboundary coherence of Natura 2000)
- To determine **ecological corridors**
 - Where do these **already exist**?
 - Where are **deficiencies**?



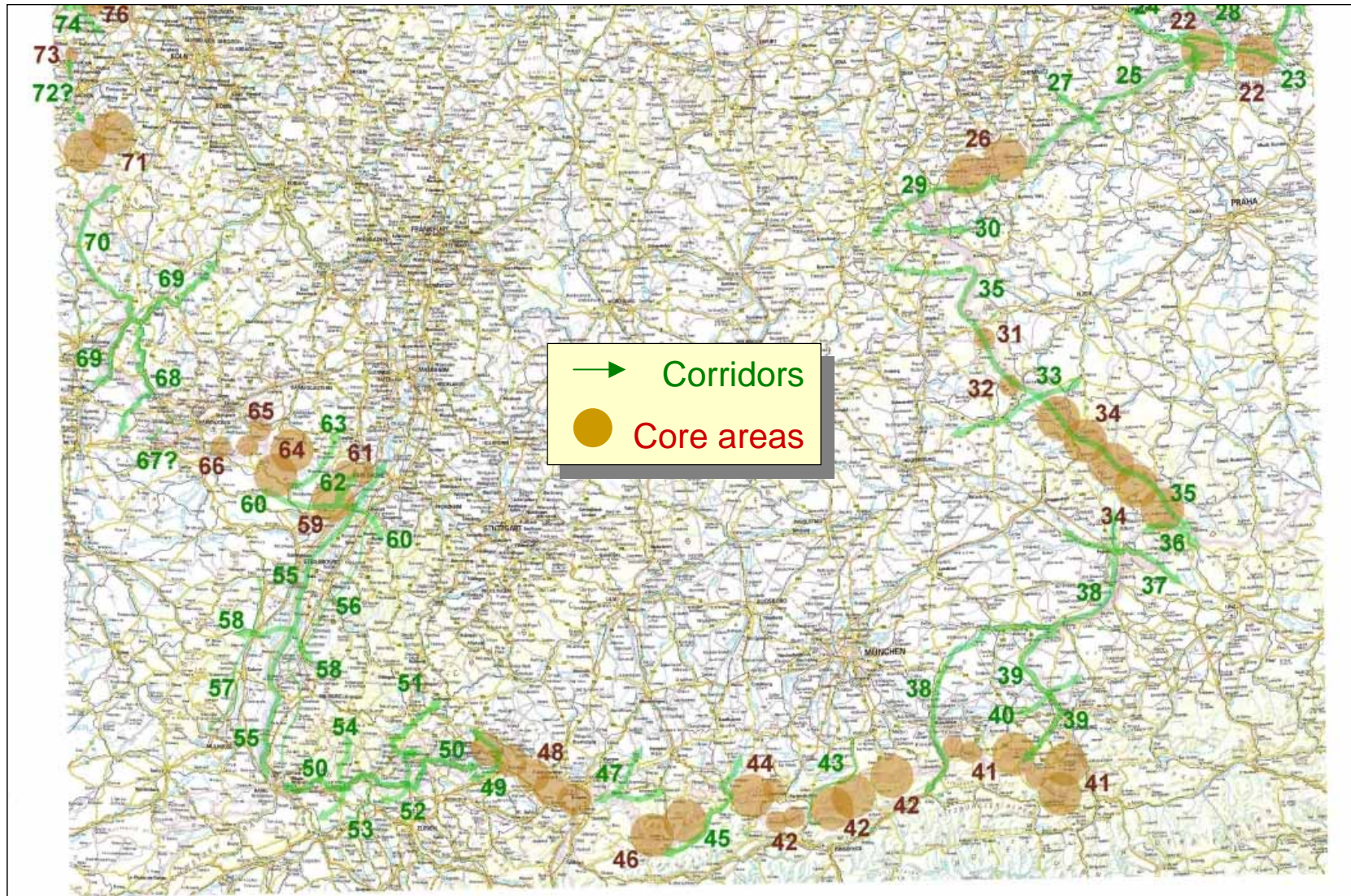
Results I



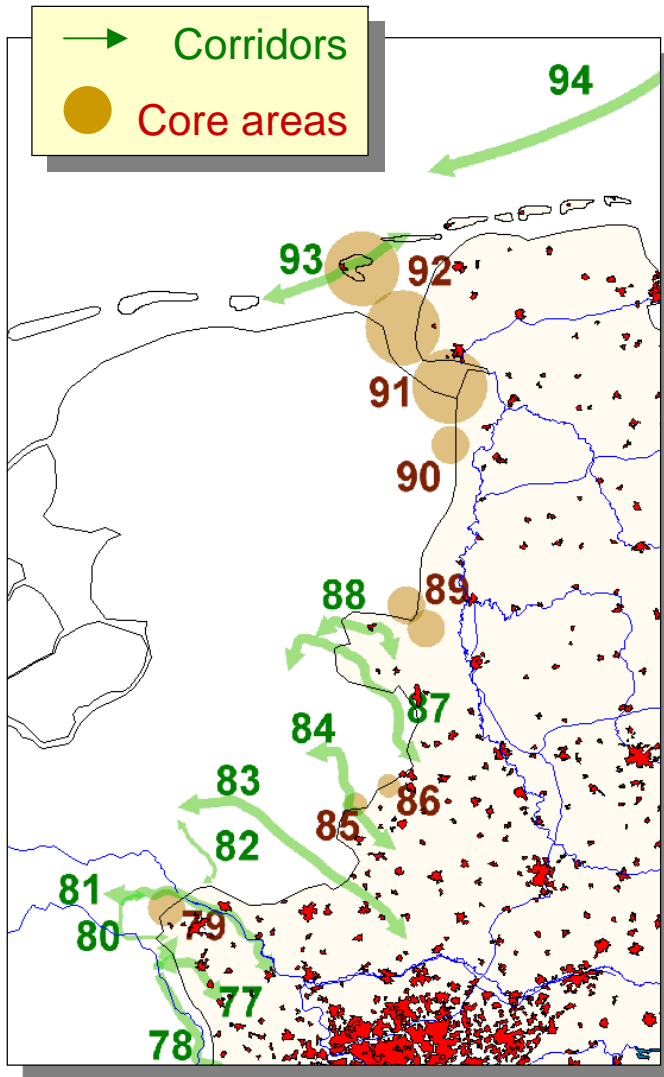
Results I



Results I

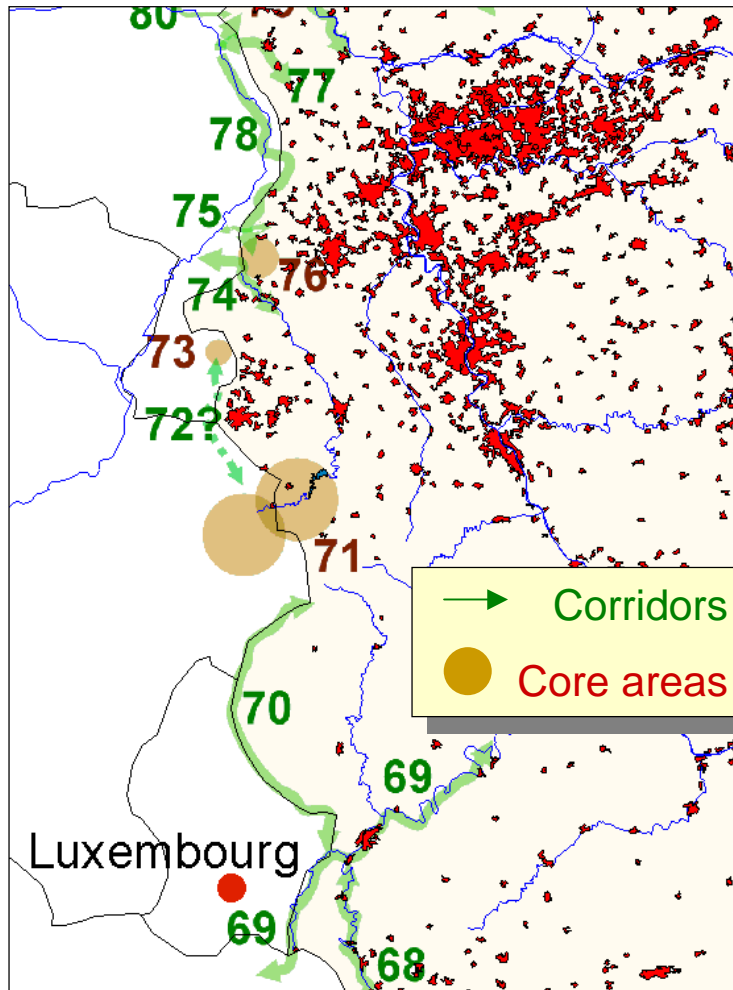


Results II



94	Deutsche Bucht als Teil des Ostatlantischen Vogelzugweges (NL, NI, HH, SH, DK)
93	Dünen u. Dünenheiden der West- und Ostfriesischen Inseln (NI, NL)
92	Niederländisches und niedersächsisches Wattenmeer (NI, NL)
91	Grenzüberschreitende Feuchtgebiete des Dollarts (NI, NL)
90	Grenzüberschreitende traditionelle Kulturlandschaft westlich der Ems bei Papenburg, Reiderland (NI, NL)
89	Grenzüberschreitendes Moorregenerationsgebiet Bargerveen (NL), Dalum-Wietmarscher Moor und Georgsdorfer Moor (NI)
88	Potenzieller Wanderkorridor für den Fischotter entlang der Vechte (NI, NL)
87	Potenzieller Waldbiotopverbund vom Hardenberger Wald (NL) über die Itterbecker Heide (NI), Springendahl (NL) zu den Waldgebieten entlang der Dinkel (NL) und zum Bentheimer Wald (NI) (möglicher Wanderkorridor für den Fischotter)
86	Grenzüberschreitendes Moorgebiet Aamsveen (NL)/Amtsvenn, Hündfelder Moor, Eper-Gräser Venn (NW)
85	Grenzüberschreitendes Moorgebiet Ammeloer Venn (NW), Haaksbergerveen und Witte Veen (NL)
84	Möglicher Biotopverbundkorridor (auch für Rothirsch) zwischen den Waldgebieten bei Ahaus/Vreden(NW), über die Moorgebiete Ammeloer Venn (NW), Haaksbergerveen und Witte Veen (NL) bis zum Sallandse Heuvelrug (NL)
83	Möglicher Tierwanderungskorridor für Rothirsche zwischen Veluwe, Korenburger Veen (NL) und Hohe Mark-Dämmerwald (NW)
82	Möglicher Biotopverbundkorridor (auch für Rothirsch) von der Veluwe (Havikerpoort) über Oude Ijssel, Bergher Bosch (NL) nach Elten (weiter über Salmorth in den Reichswald, NW ?)
81	Fließgewässer- und Auenverbund entlang des Niederrheins (NW, NL)
80	Möglicher Biotopverbundkorridor auch für Rothirsch von der Millinger Waard über Querdamm in den Ketelwald (NL) (Duivelsberg-Reichswald, NW ?) mit Anschluss von der Millinger Waard zur Veluwe über Pannerdenscher Kanal, Ijssel (NL)
79	Düffel: grenzüberschreitendes Gänserastgebiet (NW, NL)

Results III



78	Heiden und Wälder des Maas-Plateau von Gennep (NL evtl. mit Anschluss an den Reichswald, NW) via Nationalpark Maasduinen (NL) nach Arcen-Velden/De Krosselt (NL) weiter bis Heronger Heide - Krickenbecker Seen (NW) - Heiden und Wälder bei Brüggem-Bracht (NW) via Schwalm-Nette-Grenzwald (NW) zum Meinweg Nationalpark (NL)
77	Niederungen von Niers und Fleuth (NW, NL) (Fließgewässer- und Auenverbund)
76	Wald- und Trockenhabitatverbund im Bereich des Nationalparks Meinweg (NL), Forst Meinweg mit Rizroder Düne (NW)
75	Schwalmtal (NL) - Elmpter Schwalmbruch, Schwalm und Schwalmaue - Brachter Wald (NW): grenzüberschreitender Feuchtlebensraumverbund
74	Rur-/Roer-System: Fließgewässerverbund bis zur Maas (NW, NL)
73	Grenzüberschreitendes Heidegebiet Teverener Heide (NW), Brunsummer Heide (NL)
72	Möglicher Biotopverbundkorridor von der Brunsummer Heide (NL) ins Hohe Venn/Haute Fagne (B)
71	Hohes Venn/Haute Fagne (B), Nationalpark Eifel (NW): großflächige Schutzgebiete beidseitig der Grenze (grenzüberschreitender Lebensraum für Luchs, Wildkatze und Rothirsch)
70	Our-Sauer-System mit Seitentälern (RP, LUX): grenzüberschreitendes Biotopverbundsystem für Fließgewässer und Trockenhabitate; potenzielle Tierwanderkorridore für Otter, Wildkatze, Luchs und Rothirsch
69	Moseltal : potenzieller Trockenhabitatverbund (RP, SL, LUX, F)
68	Nied- und Saartal: potenzieller Fließgewässer- und Trockenhabitatverbund (SL, F)

... thanks to all participants





Study „Länderübergreifende Achsen des Biotopverbunds“

Duration: 1.8.2004 – 30.10.2006

Goal: Identification and representation (GIS-map, data base) of the

- Core areas
- Corridors and
- Gaps of **national** and **international** interest

**Bridging the gap between regional and national
plannings and European scale requirements of
ecological coherence**

The end



Author/Contact:

Dr. Ullrich, Karin
Bundesamt für Naturschutz
Biotopschutz und Landschaftsökologie I 2.1
Konstantinstr. 110
53179 Bonn
Germany
e-mail: UllrichK@bfn.de

This presentation was held at the International Workshop “Ecological networks and coherence according to article 10 of the Habitats Directive” 9-13 May 2005 at the Isle of Vilm.

© The copyright of this presentation lies by the author.